



NORTH CAROLINA
Department of Transportation

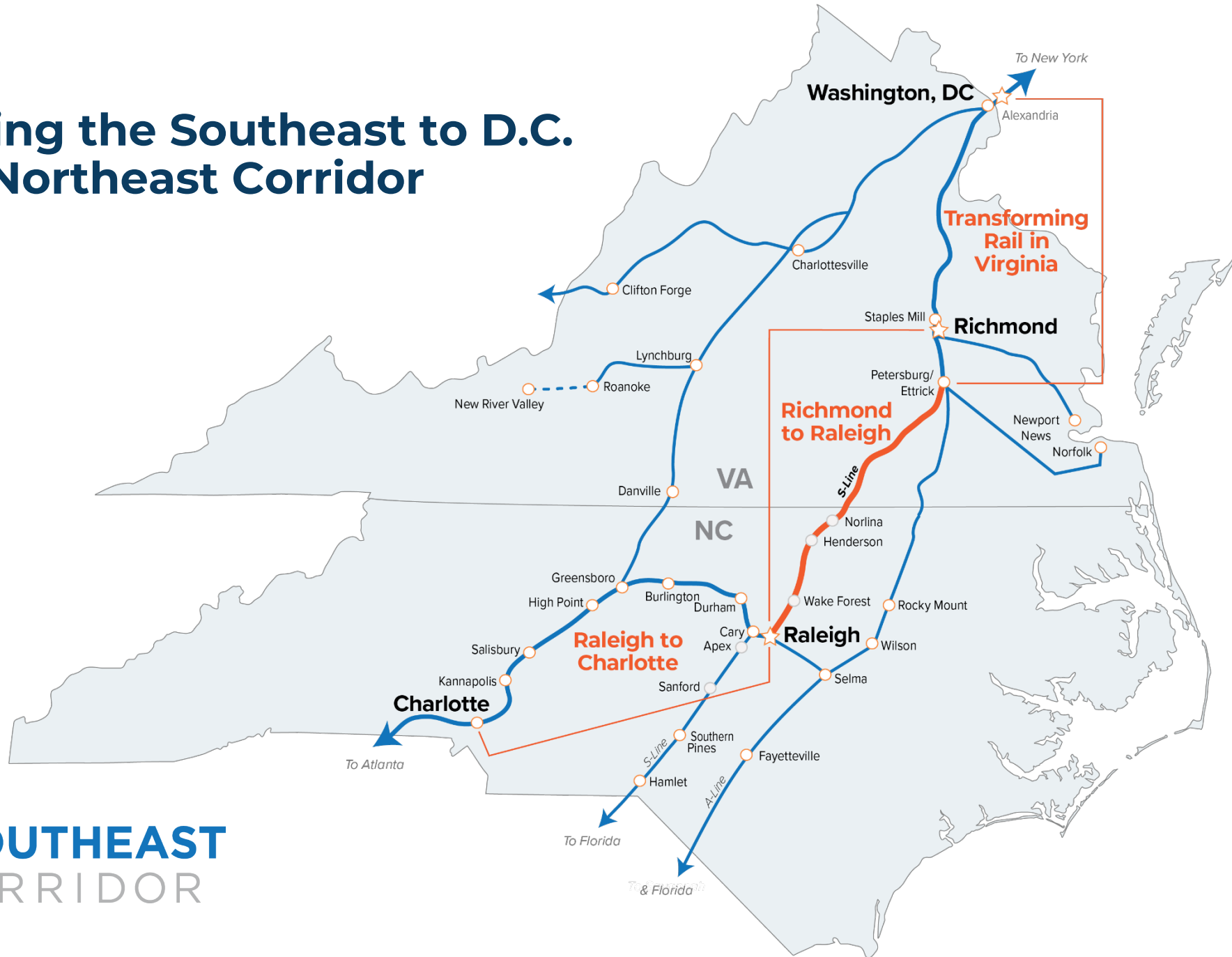
S-Line Update

Jason Orthner, P.E., CPM
Rail Division Director

February 22, 2024

Connecting people, products and places safely and efficiently with customer focus, accountability and environmental sensitivity to enhance the economy and vitality of North Carolina

Connecting the Southeast to D.C. and the Northeast Corridor

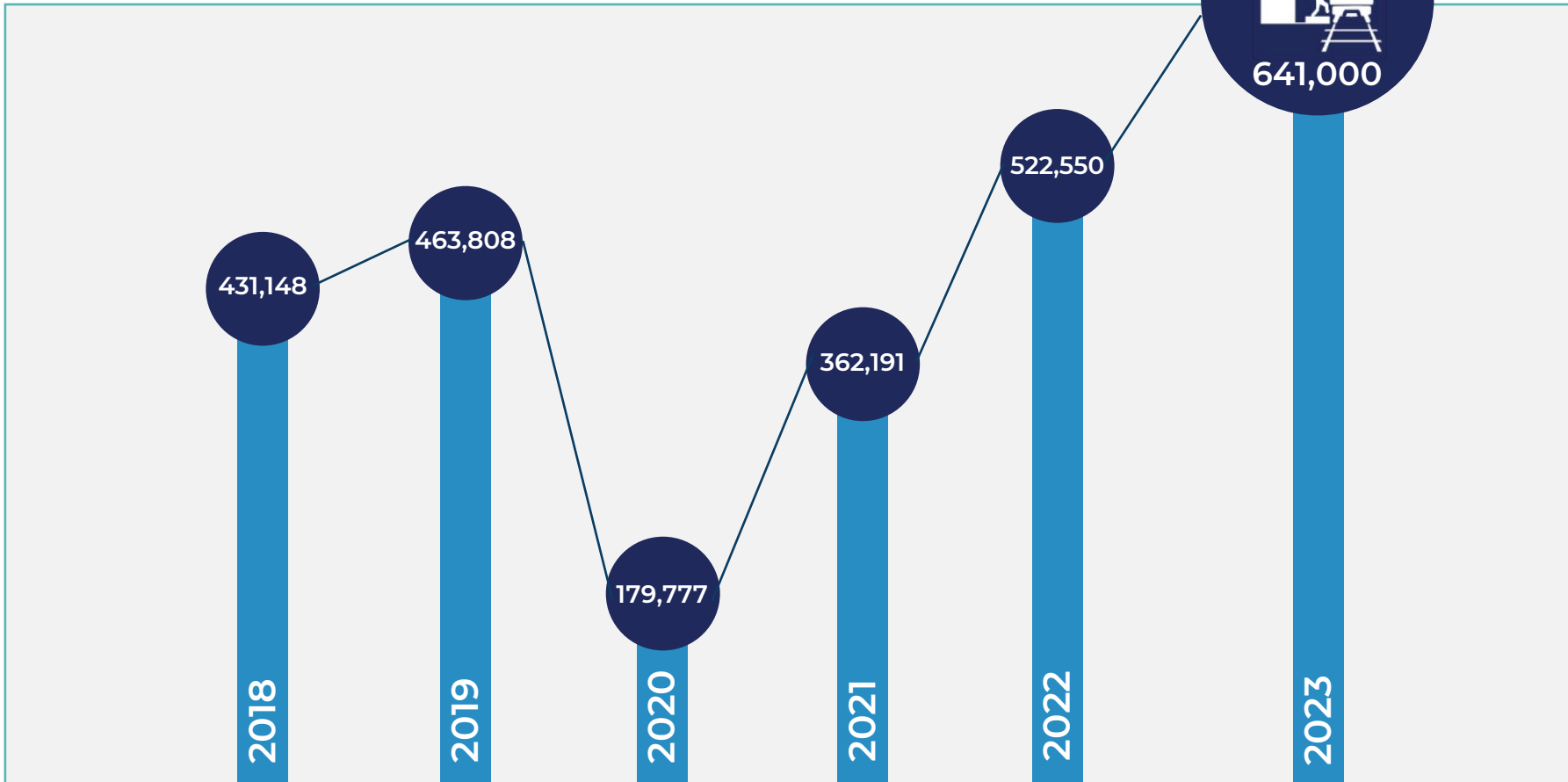




NC Intercity Passenger Rail Service – Piedmont and Carolinian services

Highest ridership in 33-year history

38%
ridership
growth over 2019
pre-pandemic
levels



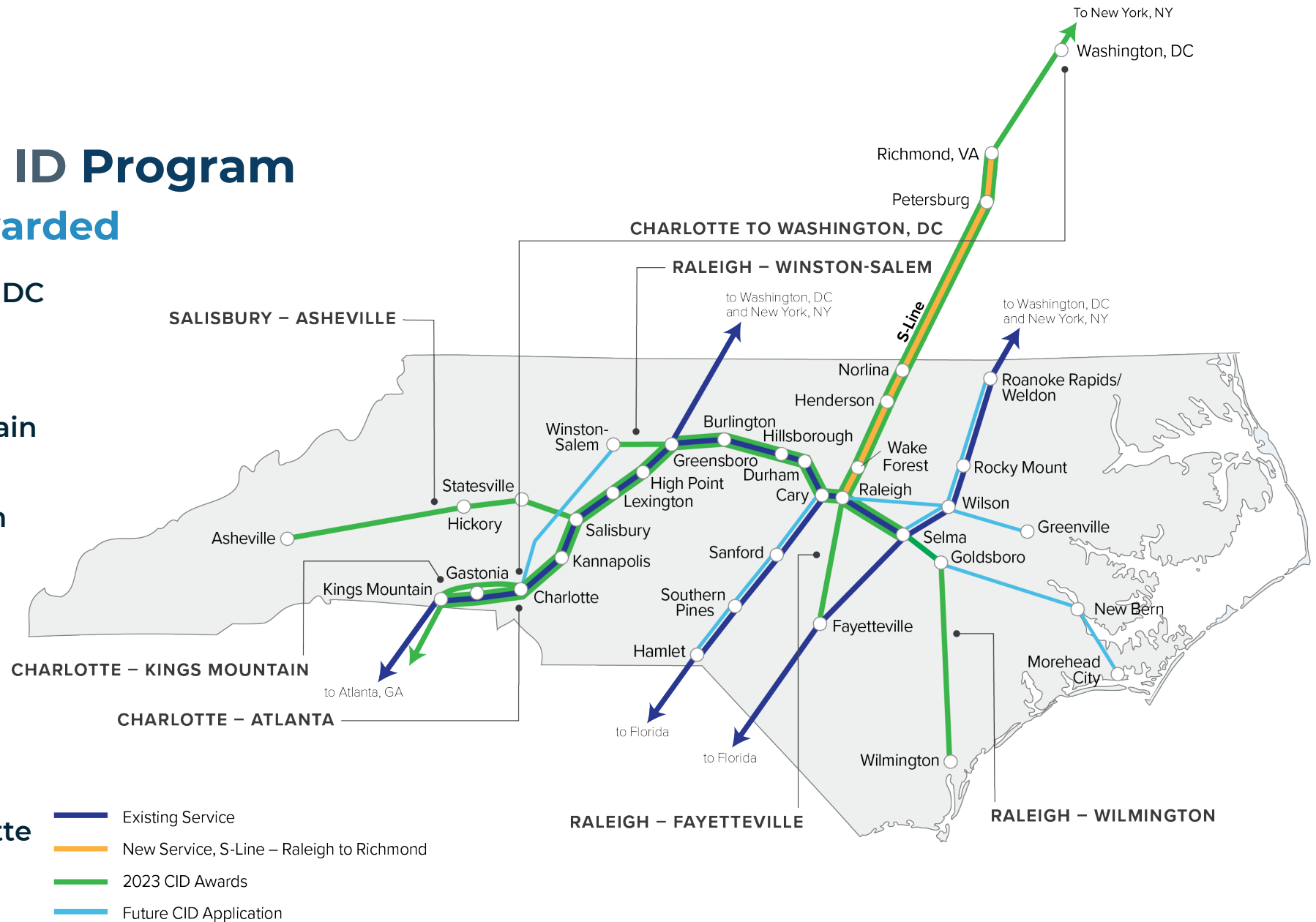
NC FRA Corridor ID Program

Seven Corridors Awarded

- ✓ Charlotte to Washington, DC
- ✓ Salisbury to Asheville
- ✓ Raleigh to Wilmington
- ✓ Charlotte to Kings Mountain
- ✓ Raleigh to Fayetteville
- ✓ Raleigh to Winston-Salem
- ✓ Charlotte to Atlanta

Future CID Applications:

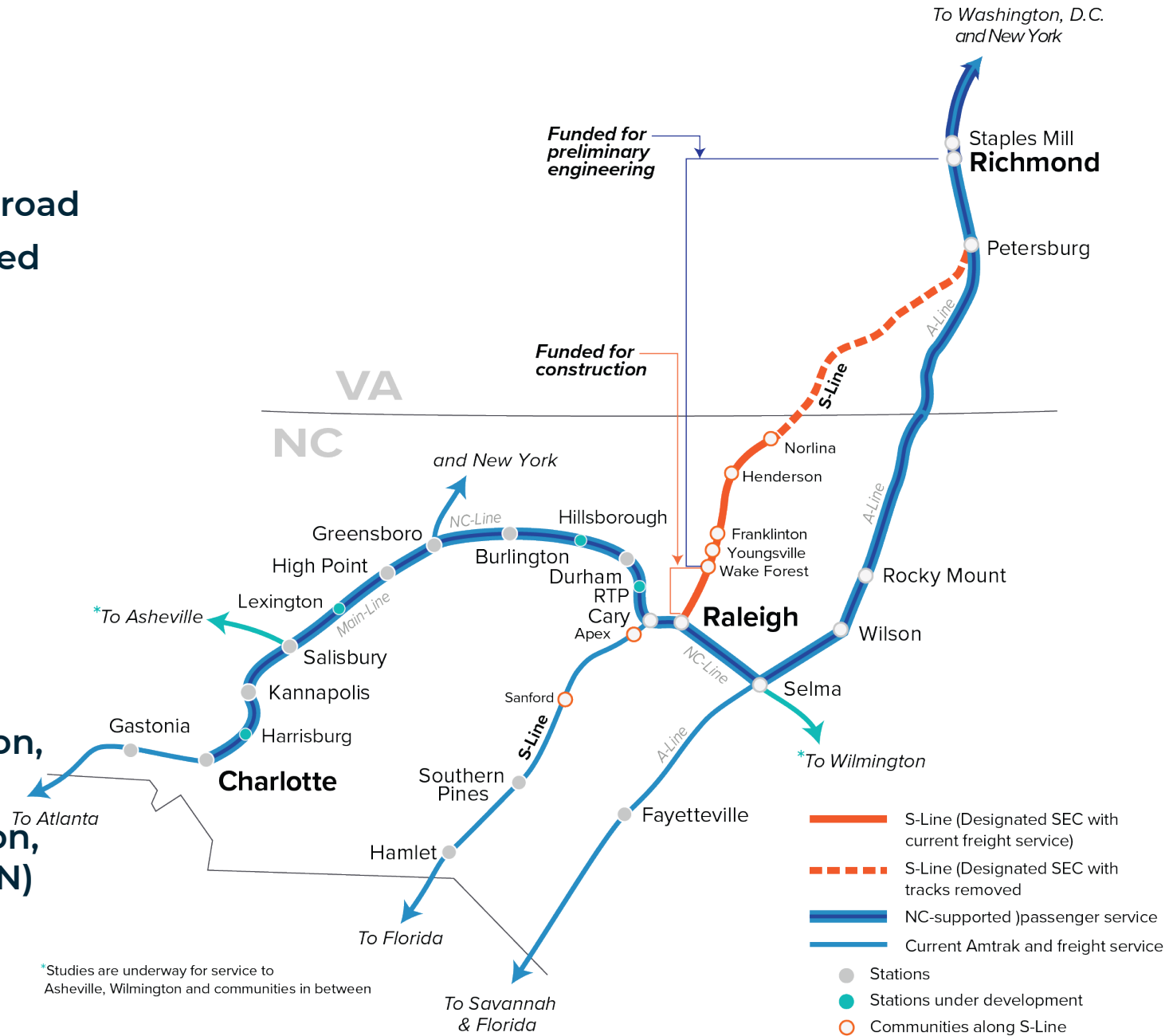
- Raleigh to Greenville
- Raleigh to Hamlet
- Raleigh to Morehead City
- Winston-Salem to Charlotte
- Raleigh to Weldon



Towns shown are for geographical reference only and do not represent station locations.

S-Line: Raleigh to Richmond

- ✓ NEPA Complete – 162 miles rail / 82 miles road
- ✓ Public ownership - VA rail corridor acquired
NC rail corridor acquisition underway
(FY '20 \$47.5M FRA CRISI grant)
- ✓ (FY '21) \$57.9M FRA CRISI grant
 - Land surveying, prelim. engineering (Raleigh to Richmond)
- ✓ (FY '22-23) \$1.09 Billion – FSP grant
 - **Engineering, ROW, and construction (Raleigh to Wake Forest)**
- Upcoming grant opportunities:
 - Construction: Wake Forest to Henderson, ~\$1B (~\$800M FY '24 FRA FSP)
 - Construction: Stations in WF, Henderson, Sanford, RTP (~\$122M FY '23 USDOT RCN)



Raleigh to Wake Forest – Funded for Construction

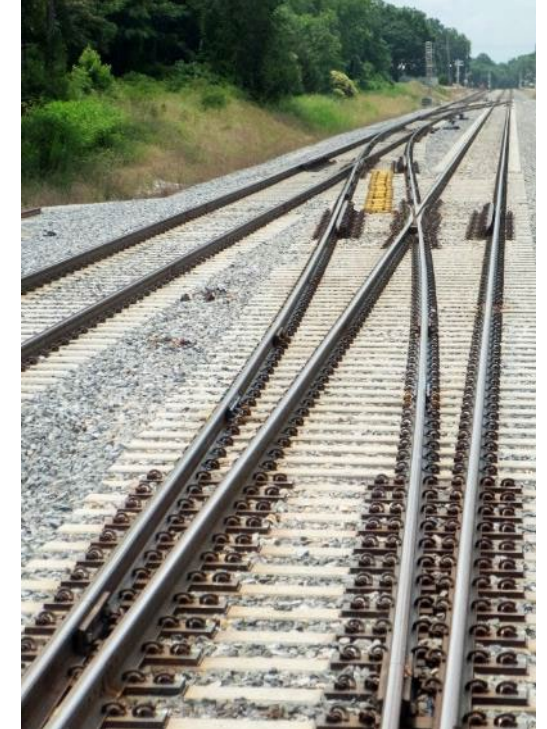
\$1.37B total project

- Final Design, ROW, Construction
- Grade separations, including:
 - Maynard Road
 - Trinity Road
 - Wolfpack Lane
 - New Hope Church Road
 - Millbrook Road
 - Gresham Lake Road
 - Durant Road
 - Ligon Mill Road
 - Holding Avenue
- ~**5** miles of roadway corridor work
- ~**1** mile of railroad structures
- ~**18** miles of rail corridor
- Structures, clearing, grading, paving, erosion control, traffic control, signalization, RR control systems, drainage, track construction, facility construction, utilities relocation and construction, etc.

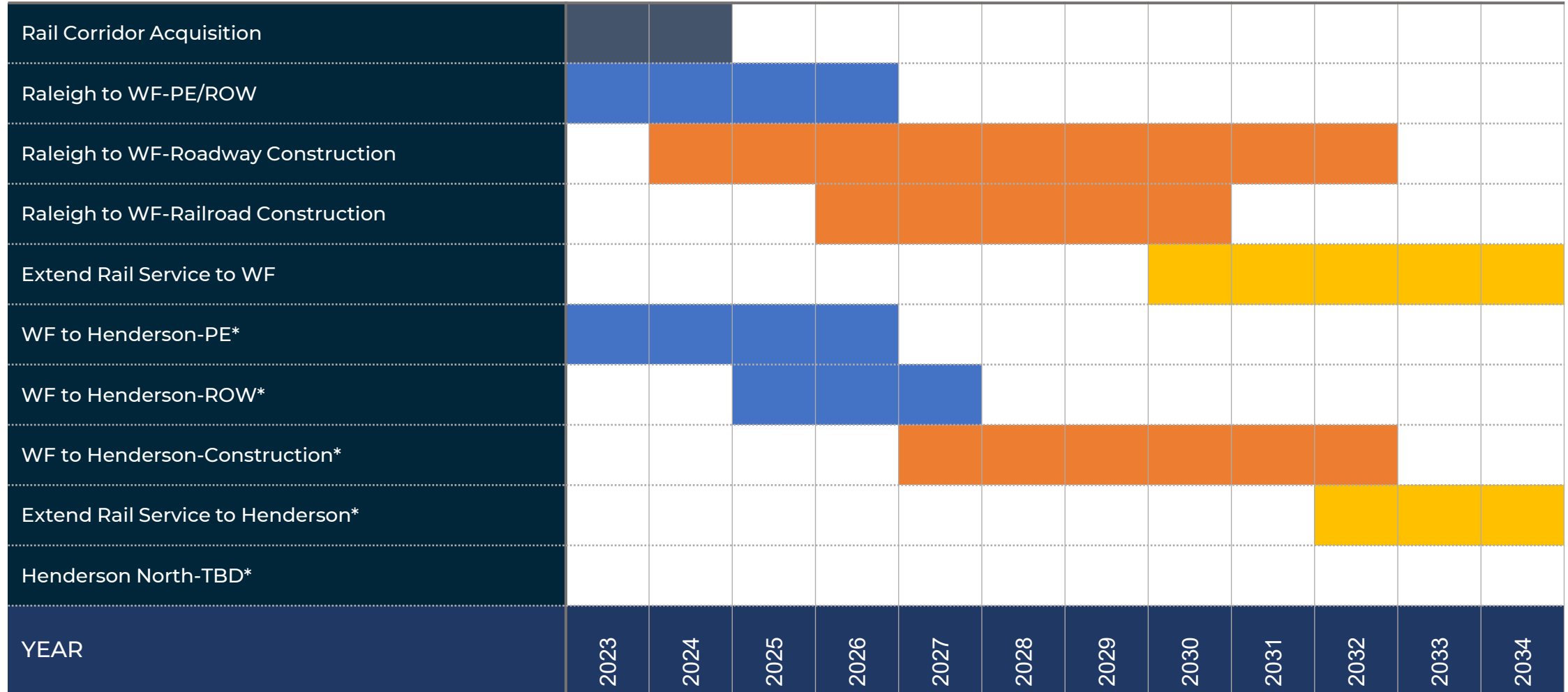


We are building one of the most technologically advanced railroads in the Southeast

- 110 MPH passenger rail speeds
- Fully grade separated road/rail
- Concrete crossties
- High speed switches
- High level platforms
- Freight bypass tracks
- Positive Train Control
- Advanced signal systems



Conceptual Program Schedule



* Schedule dependent on funding



Next Steps

- ✓ Early lets – P-5720 Durant Rd (March '24); P-5715 New Hope Church Rd (Aug '24)
- ✓ Project Industry Day forthcoming – targeting April / May 2024
- ✓ Expedite Raleigh to Wake Forest final design/construction program
- ✓ Finalize agreements between NCDOT and stakeholders
- ✓ Continue intentional coordination with industry, communities, Virginia, railroads, and other key stakeholders
- ✓ Continue preparation and submittal of grant applications for next construction segments

Thank you!

